

# Salve Regina

“Gaudium mundi”

Arjan van Dijk

1968

♩ = 60

S1 *f* Sal - ve, Re - gi - na, *mf* ma - ter

S2

A1

A2 *f* Sal - ve, Re - gi - na, *mf* ma - ter

T1 *f* Sal - ve, Re - gi - na, *mf* ma - ter

T2

B1 *f* Sal - ve, Re - gi - na, *mf* ma - ter

B2 *f* Sal - ve, Re - gi - na, *mf* ma - ter

# Salve Regina

9 *dim.*

mi - se - ri - cor - di - ae:

*dim.*

mi - se - ri - cor - di - ae:

9 *dim.*

mi - se - ri - cor - di - ae:

*dim.*

mi - se - ri - cor - di - ae:

*dim.*

mi - se - ri - cor - di - ae:

Salve Regina

♩ = 60

16

*p*

Vi - ta, dul - ce - - - do,

*p*

Vi - ta, dul - ce - do, dul - ce - do,

*p*

Vi - ta, dul - ce - - - do,

16

*p*

Vi - ta, dul - ce - - - do,

*p*

Vi - ta, dul - ce - do, dul - ce - do,

*p*

Vi - ta, dul - ce - - - do,

# Salve Regina

♩. = 40

23

et spes nos - tra, sal - ve.

et spes nos - tra, sal - ve.

et spes nos - tra, sal - ve.

et spes nos - tra, sal - ve.

23

et spes nos - tra, sal - ve.

et spes nos - tra, sal - ve.

et spes nos - tra, sal - ve.

et spes nos - tra, sal - ve.

# Salve Regina

29 *mf* *cresc.* *f*

Ad te cla - ma - mus,

*mf* *cresc.* *f* *p*

Ad te cla - ma - mus, ex -

*mf* *cresc.* *f* *p*

Ad te cla - ma - mus, ex -

*mf* *cresc.* *f*

Ad te cla - ma - - - mus,

29 *mp*

ex -

*mf* *cresc.* *f* *p*

Ad te cla - ma - mus, ex -

*mf* *cresc.* *f* *p*

Ad te cla - ma - mus, ex -

*p*

ex -

Salve Regina

36

su - les fi - li - i E - vae.

su - les fi - li - i E - vae.

This system contains four staves. The top staff is a treble clef with a key signature of three flats and a common time signature, containing seven rests. The second staff is a treble clef with the same key signature and time signature, containing a half note, a quarter note triplet, a quarter note, a half note, a quarter note triplet, a quarter note, and a half note. The third staff is a treble clef with the same key signature and time signature, containing a half note, a quarter note, a quarter note, a quarter note, a half note, a half note, and a half note. The fourth staff is a treble clef with the same key signature and time signature, containing seven rests.

36

- su - les fi - li - i E - vae.

su - les fi - li - i E - vae.

su - les fi - li - i E - vae.

su - les fi - li - i E - vae.

This system contains four staves. The top staff is a treble clef with a key signature of three flats and a common time signature, containing a half note, a quarter note, a quarter note, a quarter note, a half note, a half note, a half note, a half note, a half note, and a half note. The second staff is a treble clef with the same key signature and time signature, containing a half note, a quarter note triplet, a quarter note, a half note, a quarter note triplet, a quarter note, and a half note. The third staff is a bass clef with the same key signature and time signature, containing a half note, a half note, a quarter note, a quarter note, a half note, a half note, and a half note. The fourth staff is a bass clef with the same key signature and time signature, containing a half note, a half note, a half note, a half note, a quarter note triplet, a quarter note, and a half note.

Salve Regina

43 *mf*

Ad te su - spi - ra - - -

*mf*

Ad te su - spi - ra - mus, ge -

*mf*

Ad te su - spi - ra - mus, ge -

*mf*

Ad te su - spi - ra -

43 *mf*

Ad te su - spi - ra - - -

*mf*

Ad te su - spi - ra - mus, ge -

*mf*

Ad te su - spi - ra - mus, ge -

*mf*

Ad te su - spi - ra -

Salve Regina

51

mus,

men - tes et flen - tes in

men - tes et flen - tes in

mus,

Detailed description: This system contains four staves of music. The first staff is a vocal line with a melodic line of half notes: G4, A4, B4, C5, B4, A4, G4. The second staff is a vocal line with lyrics 'men - tes et flen - tes in', featuring a dynamic marking of *f* and a crescendo hairpin. The third staff is another vocal line with lyrics 'men - tes et flen - tes in', also featuring a dynamic marking of *f* and a crescendo hairpin. The fourth staff is a vocal line with a melodic line of half notes: G4, A4, B4, C5, B4, A4, G4, ending with the word 'mus,'.

51

mus,

men - tes et flen - tes in

men - tes et flen - tes in

mus,

Detailed description: This system contains four staves of music. The first staff is a vocal line with a melodic line of half notes: G4, A4, B4, C5, B4, A4, G4. The second staff is a vocal line with lyrics 'men - tes et flen - tes in', featuring a dynamic marking of *f* and a crescendo hairpin. The third staff is another vocal line with lyrics 'men - tes et flen - tes in', also featuring a dynamic marking of *f* and a crescendo hairpin. The fourth staff is a vocal line with a melodic line of half notes: G4, A4, B4, C5, B4, A4, G4, ending with the word 'mus,'.



Salve Regina

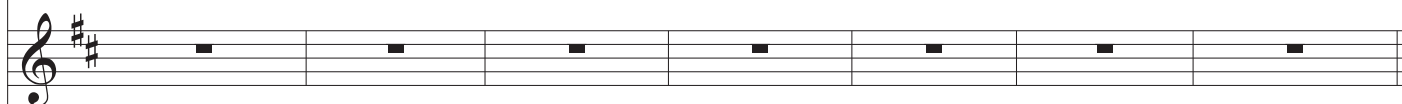
58



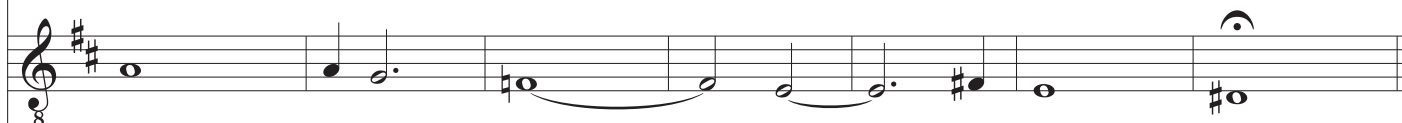
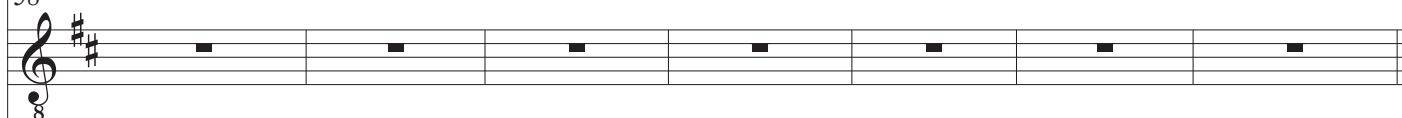
hac la - cri - ma - rum val - le.



hac la - cri - ma - rum val - le.



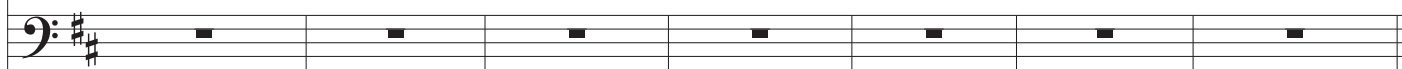
58



hac la - cri - ma - rum val - le.



hac la - cri - ma - rum val - le.



Salve Regina

65 *f*

E - ia er - go, Ad - vo - ca -

E - ia er - go, Ad - vo - ca -

E - ia er - go, Ad - vo - ca -

E - ia er - go, Ad - vo - ca -

65 *f*

E - ia er - go, Ad - vo - ca -

E - ia er - go, Ad - vo - ca -

E - ia er - go, Ad - vo - ca -

E - ia er - go, Ad - vo - ca -

73

- ta nos - tra,

- ta nos - tra,

- ta nos - tra,

- ta nos - tra,

*mf*

il - los tu - os

73

- ta nos - tra,

*mf*

il - los tu - os

- ta nos - tra,

- ta nos - tra, il - - - los tu -

*mf*

- ta nos - tra,

*mf*

il - los tu - os

81

mi - se - ri - cor - des o -

81

mi - se - ri - cor - des o -

- os mi - se - ri - cor - des o -

mi - se - ri - cor - des o -

Salve Regina

88

ad nos con - ver - te.

ad nos con - ver - te.

ad nos con - ver - te.

cu - los

ad nos con - ver - te.

88

cu - los

ad nos con - ver - te.

ad nos con - ver - te.

cu - los

ad nos con - ver - te.

cu - los

ad nos con - ver - te.

96 *mf*

Et Je - sum, be - ne - di - ctum fru -

*mf*

Et Je - sum, be - ne - di - ctum fru - ctum ven-

*mf*

Et Je - sum, be - ne - di - ctum fru -

96 *mf*

Et Je - sum, be - ne - di - ctum fru -

*mf*

Et Je - sum, be - ne - di - ctum fru - ctum ven-

*mf*

Et Je - sum, be - ne - di - ctum fru -

104

ctum ven - tris tu - i,

*mf*

no - bis post hoc

tris tu - - tris - - i,

ctum ven - tris tu - i,

104

8

ctum ven - tris tu - i,

*mf*

no - bis post hoc

tris tu - - tris - - i,

ctum ven - tris tu - i,

110

no - bis post hoc ex - i - li - um

ex - i - - - li - um os -

no - bis post hoc ex - i - li - um

110

8 no - bis post hoc ex - i - li - um

8 ex - i - - - li - um os -

no - bis post hoc ex - i - li - um



Salve Regina

120

os - ten - de: no - bis post hoc

- ten - de:

os - ten - de: no - bis post hoc ex - i -

os - ten - de: no - bis post hoc

120

8

os - ten - de: no - bis post hoc

- ten - de:

os - ten - de: no - bis post hoc ex - i -

os - ten - de: no - bis post hoc

Salve Regina

128

ex - i - li - um os - ten - de.

*f*  
os - - - - - ten - de.

- - li - um os - ten - de.

ex - i - li - um os - ten - de.

128

8

ex - i - li - um os - ten - de.

*f*  
8  
os - - - - - ten - de.

- - li - um os - ten - de.

ex - i - li - um os - ten - de.

137

Musical score for Soprano voice, measures 137-141. The score is in G minor (three flats) and 3/4 time. It begins with a repeat sign. The lyrics are: O pi - a: O cle - mens: O pi - a: O cle - mens:

137

Musical score for Bass voice, measures 137-141. The score is in G minor (three flats) and 3/4 time. It begins with a repeat sign and an 8-measure rest. The lyrics are: O pi - a: O cle - mens: O pi - a: O cle - mens:

Salve Regina

145 *mf* > *pp*  
O dul - cis

*mf* > *pp*  
O dul - cis

*mf* > *pp*  
O dul - cis

*mf* > *pp*  
O dul - cis

145 *mf* > *pp*  
8 O dul - cis

*mf* > *pp*  
8 O dul - cis

*mf* > *pp*  
O dul - cis

*mf* > *pp*  
O dul - cis

153 *f*

Vir - go Ma - ri - a. a.

1. 2.

*mf*

Ma -

*f*

Vir - go Ma - ri - a. a.

153 *f*

Vir - go Ma - ri - a. a.

*mf*

Ma -

*mf*

Ma -

*f*

Vir - go Ma - ri - a. a.

160 *dim.* *ppp*

*mf* *f* *dim.* *ppp*

Ma - ri - a.

*f* *dim.* *ppp*

- - - - ri - a.

*dim.* *ppp*

160 *dim.* *ppp*

*f* *dim.* *ppp*

- - - - ri - a.

*f* *dim.* *ppp*

- - - - ri - a.

*dim.* *ppp*